



Test Report

Report No. A2250205377102002

Page 1 of 5

Company Name GUANGDONG CAIHUIMEI NEW MATERIAL TECHNOLOGY CO., LTD
shown on Report
Address 5 YINGBIN ROAD, DONGKENG, DONGGUAN

Sample Received Date Apr. 1, 2025
Testing Period Apr. 1, 2025 to Apr. 8, 2025

Test Conducted:
As requested by the applicant. For details refer to next page(s).

Test Conclusion The results of the test items shown on the report comply with the required limits of FDA 21CFR 177.2600 Rubber articles intended for repeated use.



Hill Zheng

Hill Zheng
Technical Manager

Apr. 8, 2025

No. R411774406

CTI Testing International Group Co., Ltd.

Inspection & Testing Services
CTI Building, Xing Dong Community, Xin'an Sub-district, Bao'an District, Shenzhen City, Guangdong Province, P.R. China

Test Report

Report No. A2250205377102002

Page 2 of 5

The following sample(s) and sample information was/were submitted and identified by/on the behalf of the applicant

Sample Name

Silicone Auxiliary Materials

Model No.

CM-100, CM-101, CM-105, CM-108, CM-201, CM-202, CM-241, CM-242A, CM-331, CM-331A, CM-332, CM-333, CM-341, CM-400, CM-401, CM-408, CM-508, CM-520, CM-520A, CM-521, CM-522, CM-526, CM-542, CM-601, CM-602, CM-608, CM-701, CM-702, CM-721, CM-741, CM-742, CM-801, CM-805, CM-806, CM-1801, CM-1805, CM-1806, CM-924, CM-925, CM-6801, CM-1020, CM-1030, CM-3000, CM-3010, CM-3020, CM-3030, CM-3040, CM-3050, BM-1100, BM-1101, BM-1102, BM-1103, BM-1105, BM-1105A, BM-1201, BM-1202, BM-1241, BM-1242, BM-1327, BM-1329, BM-1331, BM-1332, BM-1334, BM-1341, BM-1400, BM-1408, BM-1508, BM-1520, BM-1521, BM-1542, BM-1601, BM-1602, BM-1608, BM-1701, BM-1702, BM-1721, BM-1741, BM-1742, BM-801, BM-805, BM-806, BM-1801, BM-1805, BM-1806, BM-1924, BM-1925, BM-2000, BM-2109, BM-2109A, BM-1520A, BM-1521A, BM-1329A, BM-1329B, SM-5100, SM-5102, SM-5103, SM-5105, SM-5109, SM-5201, SM-5202, SM-5241, SM-5242, SM-5302, SM-5329, SM-5331, SM-5334, SM-5341, SM-5400, SM-5408, SM-5508, SM-5520, SM-5521, SM-5542, SM-5601, SM-5602, SM-5608, SM-5701, SM-5702, SM-5721, SM-5741, SM-5742, SM-5801, SM-5805, SM-5806, SM-5924, SM-5925, VNJ-0010, BL-0001, C-8, C-8A, C-8B, C-14, C-14A, C-14B, C-14C, C-14D, C-14E, C-14F, C-14H, C-14K, C-15, C-15A, C-15B, C-16, C-16A, C-18, C-18A, C-20, C-20A, C-20B, C-100A-100, C-100A-101, C-100A-102, C-100A-103, C-100A-104, C-100A-105, C-100A-106, C-100A-107, C-100A-108, C-100A-109, C-100A-110, C-100A-111, C-100A-112, C-100A-113, C-100A-114, C-100A-115, C-100B-100, C-100B-101, C-100B-102, C-100B-103, C-100B-104, C-100B-105, C-100B-106, C-100B-107, C-100B-108, C-100B-109, C-100B-110, C-100B-111, C-100B-112, C-100B-113, C-100B-114, C-100B-115, C-200A-200, C-200A-201, C-200A-202, C-200A-203, C-200A-204, C-200A-205, C-200A-206, C-200A-207, C-200B-200, C-200B-201, C-200B-202, C-200B-203, C-200B-204, C-200B-205, C-200B-206, C-200B-207, C-400-1, C-400-2, C-400-3, C-400-4, C-400-5, C-400-6, C-400-7, C-400-8, C-400-9, C-400-10, C-400-11, C-400-12, C-400-13, C-400-14, C-400-15, C-400-16, C-400-17, C-400-18, C-400-19, C-400-20, C-400-21, C-400-22, C-400-23, C-400-24, C-400-25, C-500-34C, C-500-31, C-500-32, C-500-33, C-500-34, C-500-35, C-500-36, C-500-37, C-500-38, C-500-45, C-500-46, C-500-47, C-500-48, C-500-49, C-500-50, C-500-39, C-500-40, C-500-41, C-500-42, C-500-43, C-500-44, C-400-2K, C-500-41K, GY-5000, GY-2000, GY-1000, GY-500, C-400-S, C-400-N, C-400-M, C-400-5K, C-400-15K, RJ-5000, RJ-2000, RJ-500, RJ-200, CH-800, CH-811, CH-811A, CH-811B, CH-811C, CH-811D, CH-811E, CH-811F, CH-811G, CH-811H, CH-811M, CH-811N, CH-811X, CH-822, CH-822A, CH-822B, CH-833, CH-833A, CH-833B, CH-833C, CH-855, CH-855A, CH-866, CH-866A, CH-877, CH-877A, CMT-13701, CMT-14200, CMT-15200, CMT-16200, CMT-16200A, CMT-16200B, CMT-16200C, CMT-16200D, GR-1160A, GR-1160B, GR-2160A, GR-2160B, GR-3160A, GR-3160B, GR-3150A, GR-3150B, GR-3170A, GR-3170B, GR-2150A, GR-2150B, GR-1150A, GR-1150B, GR-1260A, GR-1260B, GR-2260A, GR-2260B, GR-3260A, GR-3260B, GA-3230, GA-3240, GA-3250, GA-3270, GA-9130, GA-9140, GA-9150, GA-9170, GA-9075, GA-9180, GA-5130, GA-5140, GA-5150, GA-5170, GA-5180, GA-6630, GA-6620, GA-6420, 9075Y



Test Report

Report No. A2250205377102002

Page 3 of 5

Executive Summary:

TEST REQUEST

CONCLUSION

FDA 21CFR 177.2600 Rubber articles intended for repeated use

- Total extractives in distilled water at reflux temperature
- Total extractives in n-hexane at reflux temperature

PASS

PASS

PASS (FAIL) means that the results shown on the report (do not) comply with the required limits.

***** For further details, please refer to the following page(s) *****



Test Report

Report No. A2250205377102002

Page 4 of 5

FDA 21CFR 177.2600 Rubber articles intended for repeated use

▼ Total extractives in distilled water at reflux temperature

Test Method: FDA 21CFR 177.2600

Test Item(s)	Result	MDL	Limit	Unit
	002			
First 7 hours extraction	N.D.	0.5	≤20	mg/in ²
Succeeding 2 hours extraction	N.D.	0.5	≤1	mg/in ²

▼ Total extractives in n-hexane at reflux temperature

Test Method: FDA 21CFR 177.2600

Test Item(s)	Result	MDL	Limit	Unit
	002			
First 7 hours extraction	11.6	0.5	≤175	mg/in ²
Succeeding 2 hours extraction	N.D.	0.5	≤4	mg/in ²

Remark:

- MDL = Method Detection Limit
- N.D. = Not Detected (<MDL)
- According to the client's statement, the reasons for the multiple information in the "sample information" of this report may include (but are not limited to): supplying to different buyers, being sold to different countries or regions, former names, or mixtures of several substances.

Sample/Part Description

No.	CTI Sample ID	Description
1	002	Black grey silicone

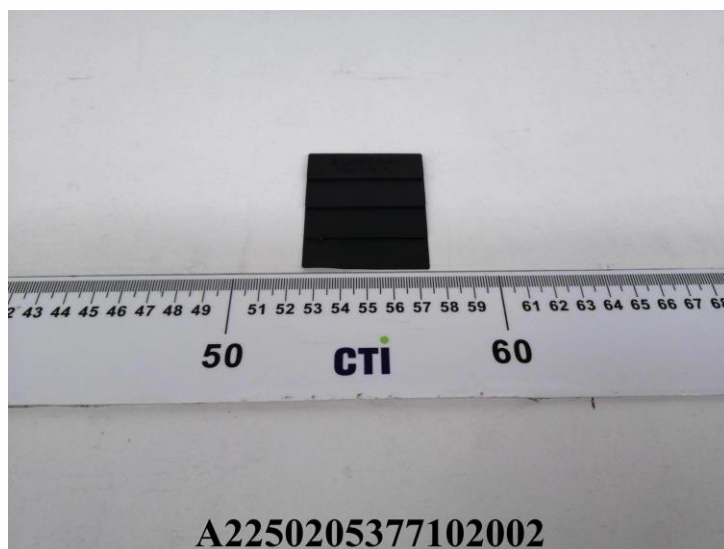


Test Report

Report No. A2250205377102002

Page 5 of 5

Photo(s) of the sample(s)



Statement:

1. This report is considered invalid without approved signature, special seal and the seal on the perforation;
2. The Company Name shown on Report and Address, the sample(s) and sample information was/were provided by the applicant who should be responsible for the authenticity which CTI hasn't verified;
3. The result(s) shown in this report refer(s) only to the sample(s) tested;
4. Unless otherwise stated, the decision rule for conformity reporting is based on Binary Statement for Simple Acceptance Rule ($w=0$) stated in ILAC-G8:09/2019 / CNAS-GL015:2022;
5. Without written approval of CTI, this report can't be reproduced except in full;
6. In case of any discrepancy between the English version and Chinese version of the testing reports (if generated), the Chinese version shall prevail.

*** End of Report ***

